

EMIKO[®]

CASE



Who are we?

Since 1999, our **Czech family business** has been at the **forefront of customized housing** for IT and electronics.

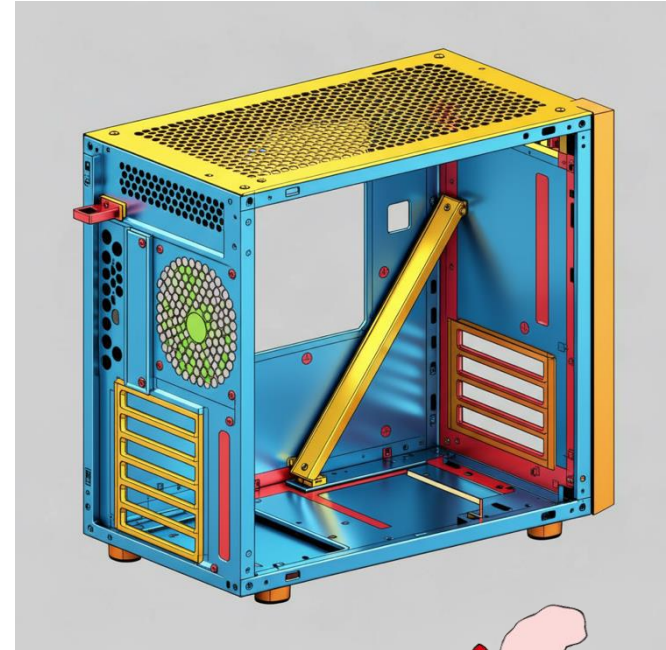
Today, as a market leader, we offer a seamless transition from initial design to final production, delivering **end-to-end solutions under one roof**.



We make customization our core focus.

The process for tailored solutions typically involves the following steps:

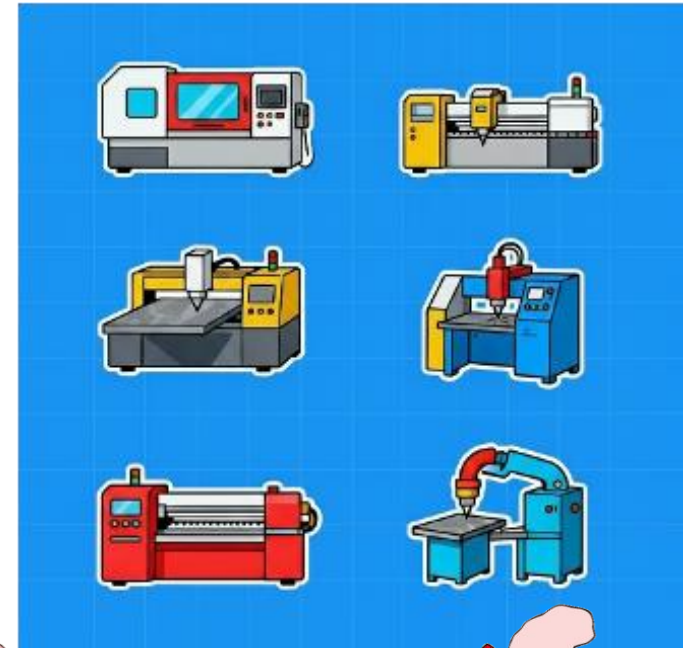
1. Receiving a request
2. Designing the prototype
3. Production of the sample
4. Feedback from the customer which can lead to:
 - Possible redesign of the sample
 - Mass production



What technologies do we use?

We emphasize **high quality, precision**, and an **individual approach** to each project. Thanks to **comprehensive machinery** and a **professional team**, we implement even the most demanding customer requirements from design to finished product.

Below you will find an overview of our **most used technologies**.



TruPunch 3000 - automated

It's a **universal automated punching machine** designed for the efficient production of a wide range of sheet metal parts in high quality.

It also allows, but also **forming, threading, embossing, marking, engraving, and deburring.**

This device's **main advantage** is **lifting** metal sheets and **disposing** of both parts and sheet metal scraps **automatically.**



TruBend 5130

It's a **universal and very precise bending machine** designed for the productive production of a wide range of sheet metal parts in top quality.

Thanks to **modern automation**, intuitive control, and ergonomic design, it allows not only classic bending, but also **complex forming, precise programming, real-time angle measurement**, and **fast handling** of parts.



Standoffs insertion

This is an **assembly operation** in which standoffs are inserted into prepared holes.

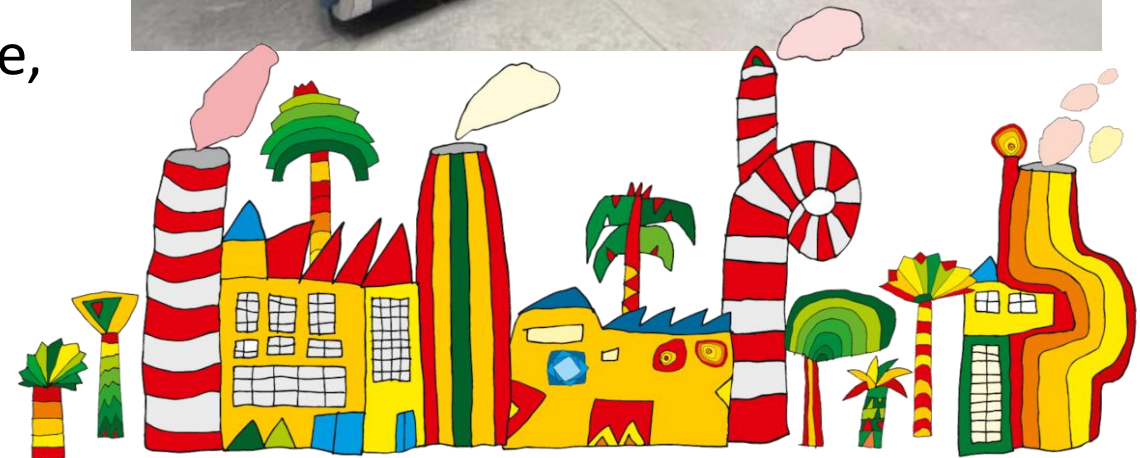
These elements serve to create a **firm and precise distance between two parts**, allow components to be attached without unwanted contact, and ensure stability and proper ventilation (for example for PCBs).



Datron Cube M8

It's a high-performance CNC machining center designed for **very precise** milling, drilling, and engraving of aluminum alloys, non-ferrous metals, composite materials and plastics in small and medium-sized series.

This machine is designed for maximum **productivity and efficiency** and offers exceptional surface quality of machined parts thanks to its rigid, vibration-damping structure, high-speed spindle (up to 60,000 rpm) and precise linear guidance.



Spot and stud welding

Spot and stud **welding** are specialized welding technologies for fast, strong and efficient joining of parts.

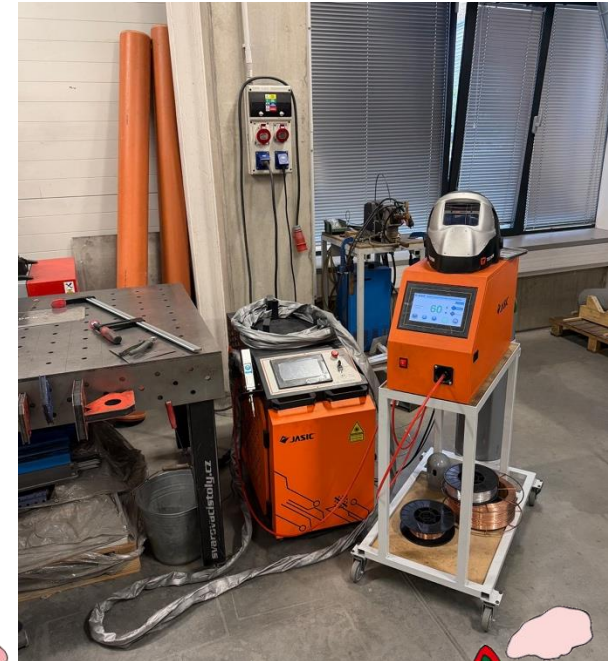
Both technologies are key for **mass production**, guaranteeing high speed, repeatability and **quality of joints** without the need for holes and secondary machining.



Laser welding

It's a **handheld fiber laser welder** designed for precise and fast welding of metal materials.

This machine has a **laser power of 1500 W** and a wide range of functions - it allows not only welding, but also cutting and cleaning surfaces without the need to replace the main device.



Steeline RWT

This professional **deburring and finishing** machine is designed for the final surface treatment of flat metal parts, specifically those processed by laser, plasma, or punching.

Its primary functions include **removing burrs, rounding sharp edges, eliminating oxide layers, and creating a uniform surface finish** on workpieces made of steel, stainless steel, aluminum, and other technical sheets.



LOEWER SWG

It's is a **semi-automatic machine** designed for deburring, edge rounding, scale removal and surface treatment of flat metal parts, especially after laser, plasma or punch cutting.

It can process steel, stainless steel, aluminum, galvanized or foil-coated sheets with thicknesses typically 0.5–20 mm.



Semi-automated powder coating line

It's a technological device designed for the **surface treatment of metal parts** using powder paints, which combines manual work steps with automated parts of the line.

Maximum coating dimensions:
200 × 150 × 50 cm.

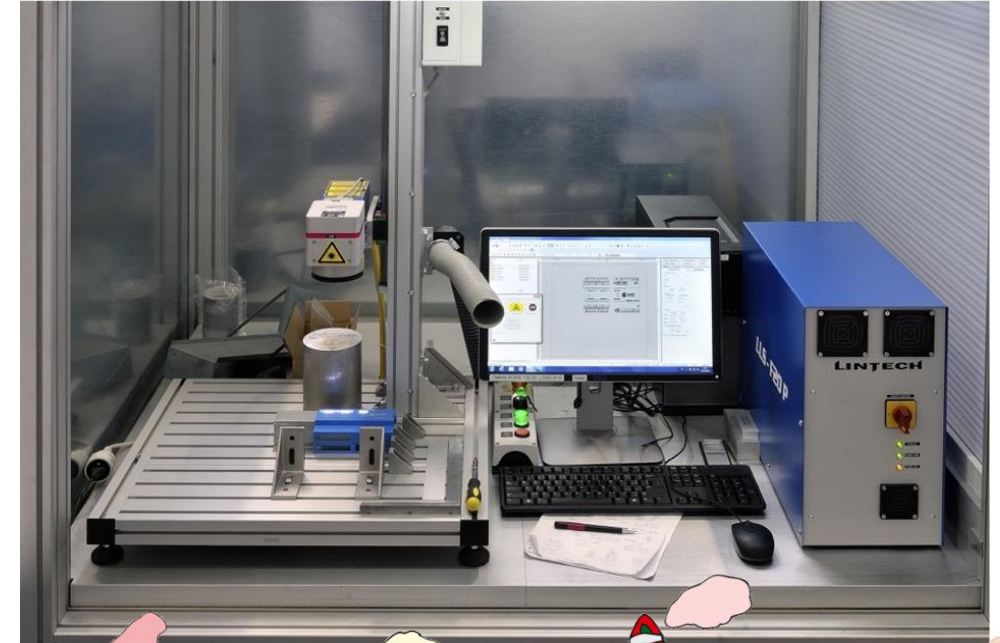


Laser marking machine - LINTECH

It's a universal device designed for **precise, fast and durable marking** of various materials using laser technology.

The machine enables **non-contact marking of metals, plastics, composites and other materials**, using powerful pulsed fiber lasers with optional power capacity.

It allows **engraving, labeling, marking with barcodes, QR codes, logos** and very fine graphic motifs with high resolution.



UV printer – MIMAKI

It's a professional **digital printer using UV LED technology** for direct printing on a wide range of materials.

The principle is to **apply special inks** that are **instantly cured by UV radiation**, creating durable, color-stable and high-quality print motifs with high resolution (up to 1440 dpi).



Assembly workplace

Our **assembly workplace** is a key part of the manufacturing process. It ensures the **complete final assembly** of cases from the basic structure to the fully assembled product.

Thanks to an **experienced team** of technicians and equipment for mechanical and electrical assembly, we offer our customers a comprehensive "turnkey" service - from design, production and surface treatment to the assembly itself and hardware installation.



Minipack Tunnel 70

A **professional heat shrink tunnel** designed for packaging products in shrink film.

The machine features a **robust steel construction** and a dual-chamber heating system that **ensures uniform film** shrinkage around the packaged product.

With a tunnel opening of 680 × 390 mm, the maximum product size is virtually **unlimited** — determined only by conveyor speed, product shape, and the type of film used.

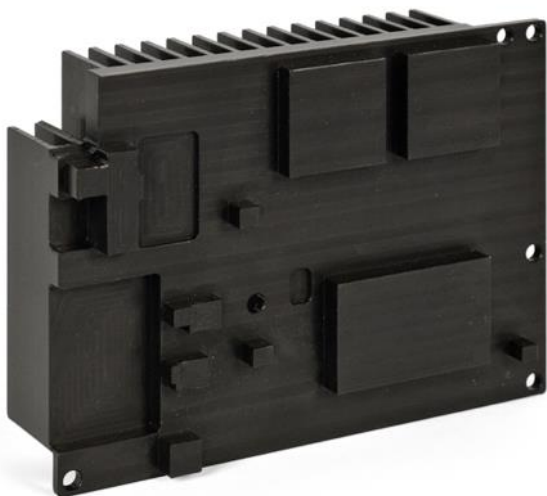


Innovation built to last.
Discover our products crafted for
uncompromising quality and reliability.





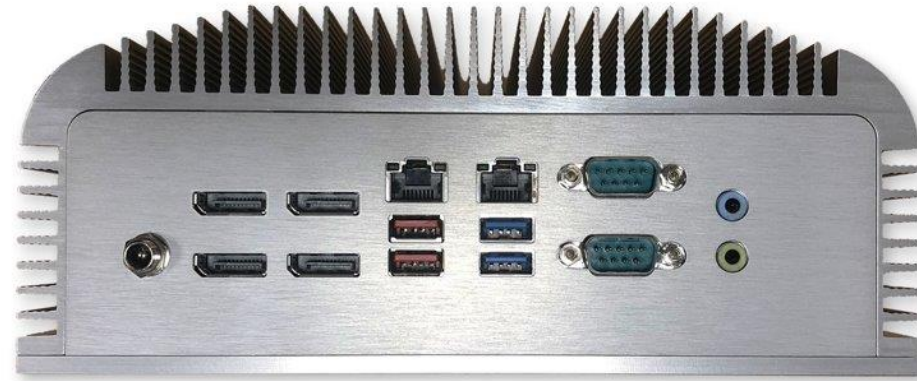






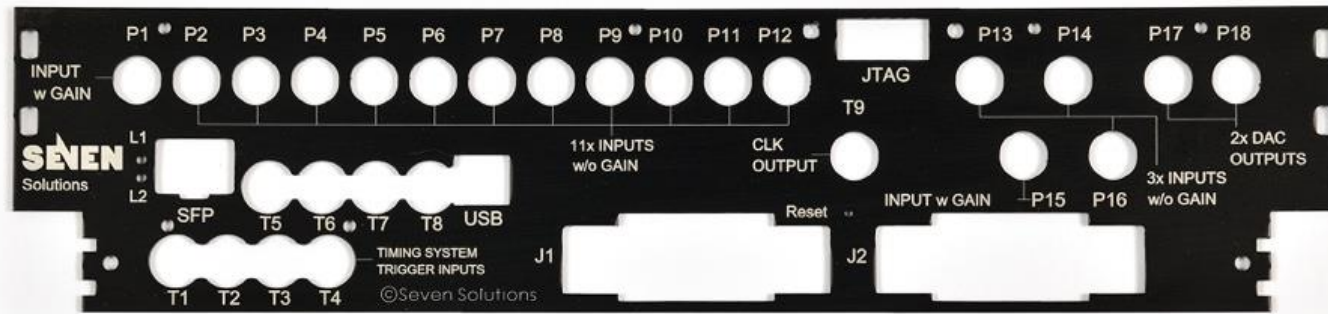


















We work with clients all over the world.



Green energy for sustainable production.

Since 2023, our company has been equipped with a solar power system installed on the rooftop.

On sunny days, we are capable of fully covering our electricity consumption exclusively through solar energy.

In total, our facility utilizes 340 solar panels, collectively generating more than 1 MWh of electricity per day.

By choosing to cooperate with us, you are supporting sustainable production and a commitment to environmental responsibility.



The strength of a family group

EMKO IPC | emkoipc.cz

- We work closely with EMKO IPC, a leading Czech supplier of industrial computers, embedded systems, monitors and specialized hardware.
- They focus on comprehensive industrial computing solutions — from design and configuration to long-term support of rugged PCs, panel and rack computers.
- Thanks to this partnership, we supply cabinets with complete, reliable hardware tailored to each customer's needs.

AMTEK | amtek.cz

- Authorised distributor of industrial components and automation elements with over 30 years of experience.
- 30,000+ products for industry and automation
- Aluminium profiles and structures, custom-built projects
- Consulting, technical support, installation and training



You can visit us at our stand
on the shows listed below:



sps

smart production solutions



The EMKO team



For more information visit our website:

www.emko.cz

