

EMIKO[®]
CASE





Who are we?

We are a Czech family-owned company founded in 1999, specializing in customized housing solutions for the IT and electronics industries.

Over the years, we have grown into a market leader in customized housing solutions, offering design, development and manufacturing under one roof.

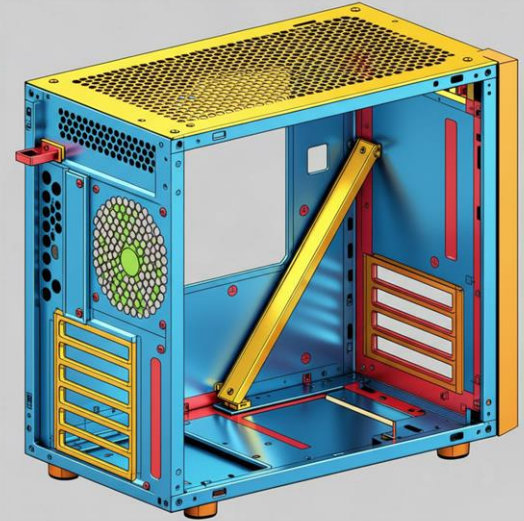




We make customization our core focus.

The process for tailored solutions typically involves the following steps:

- 1) Receiving a request
- 2) Designing the prototype
- 3) Production of the sample
- 4) Feedback from the customer which can lead to:
 - Possible redesign of the sample
 - Mass production





What technologies do we use?

In our company, we emphasize high quality, precision and an individual approach to each project. Thanks to comprehensive machinery and a professional team, we are able to implement even the most demanding customer requirements from design to finished product.

Below you will find an overview of the most used technologies in the implementation of orders.





TRUMATIC 200 R



It's a compact CNC punching machine designed for efficient and precise production of a variety of high-quality sheet metal parts. The machine operates with a punching force of up to 165 kN, while automatically changing up to 15 different tools for various operations.





TruPunch 2000



It's a compact and powerful punching machine that offers flexibility and high productivity for the production of a wide range of sheet metal parts of the highest quality. It is designed to be resource-efficient and economical even at lower capacity utilization. The machine not only allows punching, but also forming, threading, embossing, marking, engraving and deburring.





TruPunch 3000 - automated



It's a universal automated punching machine designed for the efficient production of a wide range of sheet metal parts in high quality. It allows not only punching, but also forming, threading, embossing, marking, engraving and deburring. The main advantage of this device is, that it can automatically load metal sheets and dispose of both parts and sheet metal scraps.





TrumaBend V 50



It's a compact CNC press brake designed for precise and productive processing of a wide range of small and medium-sized sheet metal parts in high quality. The machine enables classic bending, forming and serial production of parts from various materials, including steel, stainless steel and aluminum, with an emphasis on process accuracy and repeatability of each shape.





TruBend 5130



It's a universal and very precise press brake designed for the productive production of a wide range of sheet metal parts in top quality. Thanks to the most modern automation, intuitive control and ergonomic design, it allows not only classic bending, but also complex forming, precise programming, real-time angle measurement and fast handling of parts.





TruBend 7036



It's a compact and powerful press brake designed for fast, precise and productive processing of small and medium-sized sheet metal parts in the highest quality. Thanks to its high ergonomics and automated angle measurement system, it enables not only classic bending, but also the production of precisely machined parts without manual intervention and with maximum process efficiency.





Standoffs insertion



This is an assembly operation in which standoffs are inserted into prepared holes. These elements serve to create a firm and precise distance between two parts, allow components to be attached without unwanted contact, and ensure stability and proper ventilation (for example for PCBs).





Datron Cube M8



It's a high-performance CNC machining center designed for productive and very precise milling, drilling and engraving of aluminum alloys, non-ferrous metals, composite materials and plastics in small and medium-sized series. This machine is designed for maximum productivity and efficiency and offers exceptional surface quality of machined parts thanks to its rigid, vibration-damping structure, high-speed spindle (up to 60,000 rpm) and precise linear guidance.





Spot and stud welding



Spot and stud welding are specialized welding technologies for fast, strong and efficient joining of parts. Both technologies are key for mass production, guaranteeing high speed, repeatability and quality of joints without the need for holes and secondary machining.





JASIC LS-15000



It's a handheld fiber laser welder designed for precise and fast welding of metal materials. This machine has a laser power of 1500 W and a wide range of functions - it allows not only welding, but also cutting and cleaning surfaces without the need to replace the main device.





Steelline RWT



It's a professional deburring and grinding device designed for the final surface treatment of flat metal parts, especially after laser, plasma or punching. Its main functions are to remove burrs, round off sharp edges, remove oxide layers and create a homogeneous surface of workpieces made of steel, stainless steel, aluminum and other technical sheets.





LOEWER SWG



It's is a semi-automatic machine designed for deburring, edge rounding, scale removal and surface treatment of flat metal parts, especially after laser, plasma or punch cutting. It can process steel, stainless steel, aluminum, galvanized or foil-coated sheets with thicknesses typically 0.5–20 mm.





Semi – Automated powder coating line



It's a technological device designed for the surface treatment of metal parts using powder paints, which combines manual work steps with automated parts of the line.





Laser marking machine - LINTECH



It's a universal device designed for precise, fast and durable marking of various materials using laser technology. The machine enables non-contact marking of metals, plastics, composites and other materials, using powerful pulsed fiber lasers with optional power capacity. It allows engraving, labeling, marking with barcodes, QR codes, logos and very fine graphic motifs with high resolution.





UV printer - MIMAKI



It's a professional digital printer using UV LED technology for direct printing on a wide range of materials. The principle is to apply special inks that are instantly cured by UV radiation, creating durable, color-stable and high-quality print motifs with high resolution (up to 1440 dpi).





Assembly workplace



Our assembly workplace is a key part of the manufacturing process. It ensures the complete final assembly of cases from the basic structure to the fully assembled product. Thanks to an experienced team of technicians and equipment for mechanical and electrical assembly, we are able to offer customers a comprehensive "turnkey" service - from design, production and surface treatment to the assembly itself and hardware installation.





Minipack Tunnel 70



It's a professional heat shrinking machine designed for packaging products in shrink film. The machine uses a robust steel construction and a two-chamber heating system that ensures uniform shrinking of the film around the packaged product. The through tunnel has dimensions of 680 × 390 mm and the maximum size of the packaged product is practically unlimited and depends only on the conveyor speed, product shape and the film used.

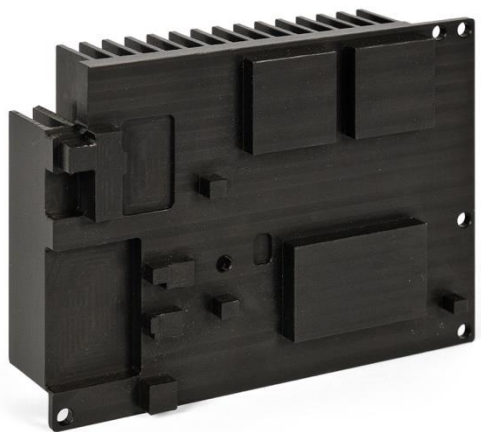


**Discover our innovative products designed to meet
the highest standards of quality and reliability.**





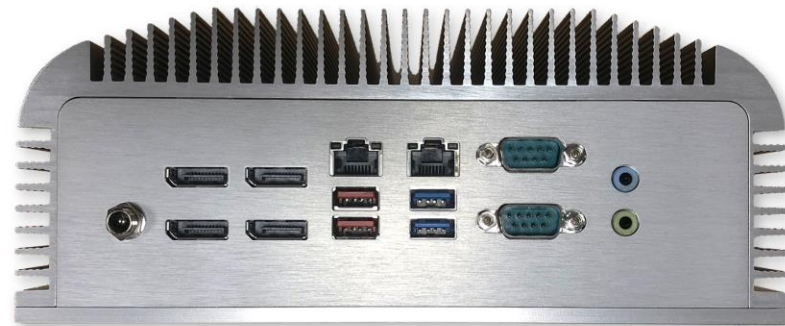






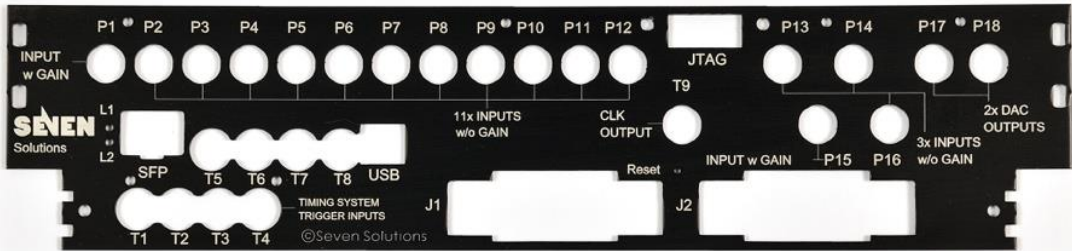




















We work with customers all over the world.





Green energy for sustainable production.

Since 2023, our company has been equipped with a solar power system installed on the rooftop.

On sunny days, we are capable of fully covering our electricity consumption exclusively through solar energy.

In total, our facility utilizes 340 solar panels, collectively generating more than 1 MWh of electricity per day.

By choosing to cooperate with us, you are supporting sustainable production and a commitment to environmental responsibility.





Strategic partner



Our company works closely with EMKO IPC, a leading Czech supplier of industrial computers, embedded systems, monitors and specialized hardware components for automation and industrial production. EMKO IPC focuses on comprehensive solutions in the field of industrial computing, including the design, configuration and support of rugged PC systems, panel and rack computers and robust monitoring systems according to individual customer requirements. Thanks to this cooperation, we can supply our customers with cabinets including complete hardware equipment with an emphasis on high reliability and long-term support.





Strategic partner



Amtek is a major Czech distributor of industrial electronic components and automation components. It focuses not only on deliveries, but also on comprehensive solutions including design, visualization and implementation of custom projects for industry, production and automation. The portfolio includes hundreds of products for production automation, intelligent technologies, conveyor systems and aluminum profile structures. Amtek also provides technical consulting, training and top-notch customer support, which guarantees the optimal solution for the individual needs of each customer.





We invite you to visit our stand at the following trade shows:



Team EMKO



For more information visit our website.

www.emko.cz

