



# AMTEK – Reliable Industrial Solutions Partner

On the market since 1991, specializing in component distribution, expert support, and custom project delivery.

## Key Areas of Expertise

- Automation Industry
- Industrial sensors and lighting
- Power supply
- Controls and indicators
- Network infrastructure and embedded PC
- Auto ID
- Safety in production
- Aluminum profile system

Our core strength lies in integrating our diverse specializations into projects designed precisely to meet our customers' specific needs. These complex projects highlight our greatest added value: a team of highly skilled technicians and application engineers dedicated to provide best possible services and support.

## Dedicated to providing our customers with



Needs Assessment



Solution or Design Proposal



Visualization and Testing



Installation and Training



Sales, Warranty, and After-Sales Service

## The Strength of a Family-Owned Group

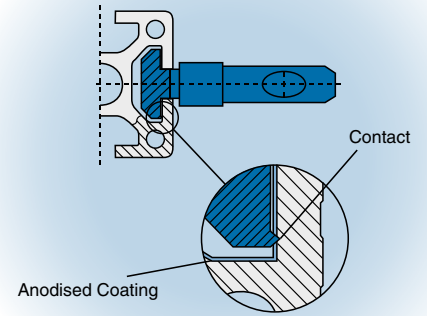
Our capabilities are enhanced through close synergy with other members of our family group: **EMKO Case**, a specialist in sheet metal fabrication focusing on custom enclosures for the electronics and IT industries, and **EMKO IPC**, an expert in the production and distribution of industrial computers and components.



## Safety in every detail: Conductive bonding of MayTec structures

**MayTec aluminum profiles offer a unique solution for easy and efficient equipotential bonding. This key electrical feature ensures maximum protection for both personnel and equipment.**

Precise connection of metal parts ensures effective equipotential bonding, significantly reducing the risk of electric shock and enhancing the efficiency of protective devices. MayTec structures not only comply with the stringent CSN 33 2000-5-54 and CSN 33 2130 ed. 4 standards but also bring a superior level of safety to every project.



## Smart VS: A Revolution in Industrial Detection

**The DATALOGIC VS Series represents a breakthrough in sensing technology, combining the simplicity of a standard sensor with the power of Artificial Intelligence.**

Thanks to machine learning, it can reliably detect the presence, orientation, or quality of objects without the need for complex programming. Simply teach it the 'OK' and 'NG' (No Good) states, and the camera takes care of the rest—quickly, accurately, and regardless of shape, color, or material. It is ideal for packaging lines, label inspection, caps, or printing. Smart VS is compact, easy to integrate, and ready to use in minutes—a truly smart solution for modern automation.



## GENESYS+ GSPS: Power capable of handling extreme testing

**TDK-Lambda GENESYS+ GSPS power supplies push the boundaries of performance—delivering up to 90 kW in a compact 19-inch rack, with output currents up to 4500 A and voltages up to 600 V.**

Featuring fully programmable control, an ultra-fast response rate (up to 1,000 V/ms), and high precision, these units are ideal for the most demanding testing applications—such as simulating inrush currents for automotive starters. They operate in constant voltage, current, and power modes, allow for arbitrary waveform generation, and support a wide range of communication interfaces (LAN, USB, RS232/485, EtherCAT, Modbus-TCP). GENESYS+ GSPS is synonymous with reliability, flexibility, and performance in every detail.





## Industrial Automation

**Boosting performance and quality.** It delivers comprehensive production control, reduces costs and error rates, and enables rapid response to changes while optimizing resource utilization. Our solutions support full integration into modern control systems.

- Frequency inverters (industrial/elevator)
- Control systems (PLC)
- Servo drives
- AS-Interface
- Process instrumentation
- IO-link masters



## Control elements and indicators

**Safe control and signaling.** High-durability pushbuttons, switches, and pilot lights designed for long service life. Easy installation and reliable performance for the efficient control of machinery and equipment.

- Buttons
- Rotary switches and key switches
- Light and audio indicators
- Rugged keyboard
- Joysticks
- E-Stop and stop button
- Wireless Chargers





## Industrial sensors and lighting

**Ensuring precision and safety.** They provide reliable detection, quality control, and downtime minimization, even in the most demanding conditions. Supporting automation and energy efficiency, they enhance long-term system reliability.

- **Optical, capacitive, inductive and ultrasonic**
- **Color, label, contrast and distance sensors**
- **Circular, frame, tubular, fork sensors**
- **Incremental, absolute encoders**
- **Magnetic linear measurement**
- **Machine lighting and signal lights**
- **Lighting for camera systems**
- **Camera sensors and systems**



## Auto ID

**Identification Systems: Efficient and Transparent Accelerating and refining data logging.** We offer reliable product identification and tracking, efficient inventory management, and error elimination. Our solutions support digitalization and increase transparency across production and logistics.

- **Handheld and stationary code readers**
- **Mobile computers**
- **RFID readers**

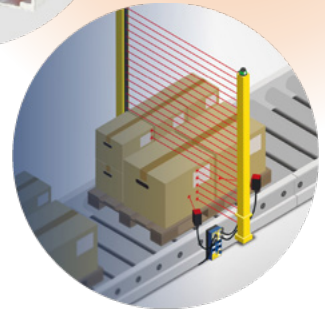




## Safety in production

**Protecting personnel and machinery.** Components for emergency shutdowns, access monitoring, and hazard detection. They ensure reliable operation, risk prevention, and compliance with stringent industrial safety standards.

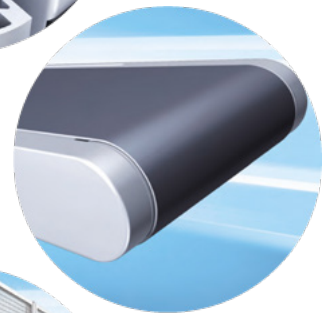
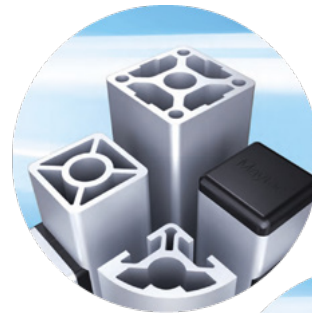
- **Safety components – switches, locks**
- **Safety light barriers and 2D scanners**
- **Switching tapes, edges and mats**
- **Fencing of machines, parts or even the entire production**

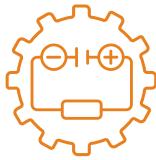


## Aluminum profile system

**Adapting to your needs.** Modular design without welding, a wide range of accessories, and easy assembly allow for rapid modifications and future expansion of frames, workstations, or structures.

- **Aluminum profiles and accessories**
- **Design and production of structures**
- **Belt conveyors**

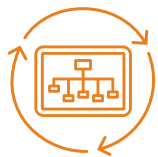




## Power supply

**Stable and efficient operation.** Reliable AC/DC and DC/DC power supplies with high efficiency and long service life. Custom-tailored solutions, including modular variants and a wide range of power and voltage outputs for industrial applications.

- AC/DC power sources
- DC/DC inverters
- Back-up power supplies and UPS
- Power Semiconductors
- Programmable resources
- EMC Filters and Accessories
- Adapters and PC power supplies



## Embedded PCs and Network Infrastructure

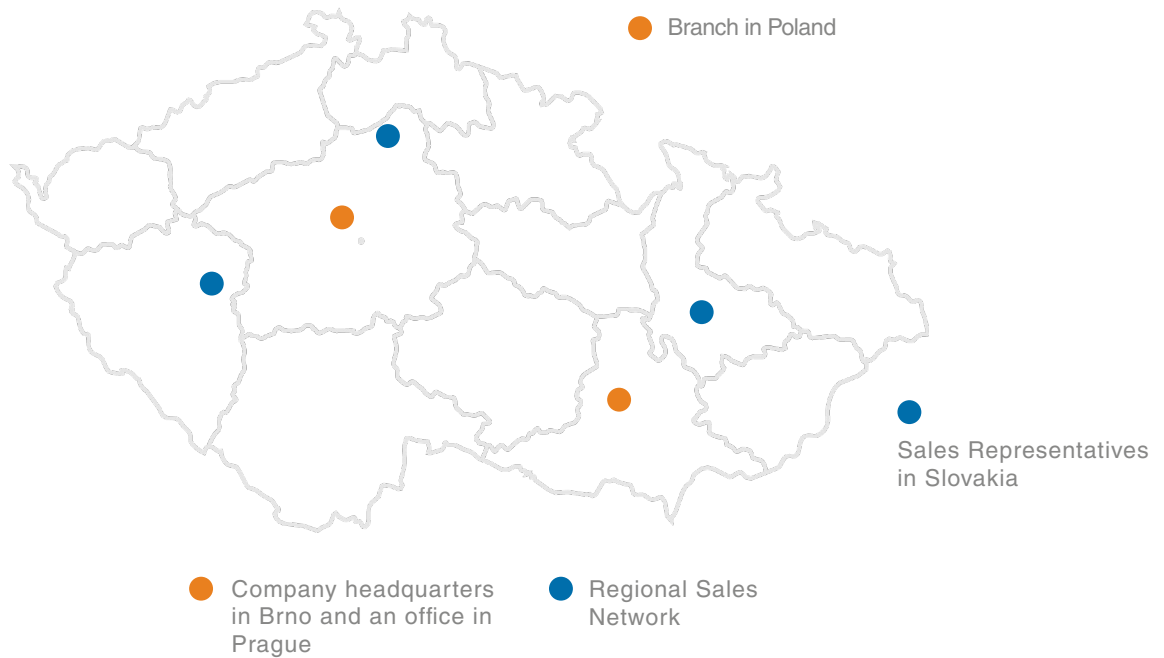
**Rugged computers, compact modules, and displays** ensure stable performance and long-term availability. Easy integration into production lines and IT infrastructure with full support for industrial standards.

- Fully Customized Solutions (EMKO Case)
- Embedded Systems (EMKO IPC)
- Motherboards, SBCs, and Computer-on-Modules
- Memory Modules, Displays, and Cover Glass
- Network Devices and Infrastructure





[www.amtek.cz](http://www.amtek.cz)



AMTEK, spol. s r.o.  
Ripska 11f, 627 00 Brno, CZ  
+420 733 643 008

Bus.Reg.: 173 28 624  
VAT: CZ173 28 624

Proud member of the  
EMKO Family Group



[www.emko.cz](http://www.emko.cz)



[www.emkoipc.cz](http://www.emkoipc.cz)