

# Installation instructions for Rear Set MV Agusta F3 800 Brutale year 2017 - Part nr. 550



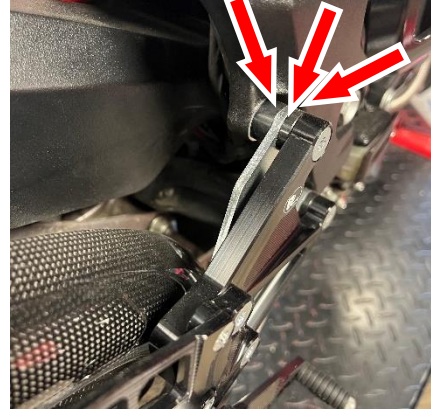
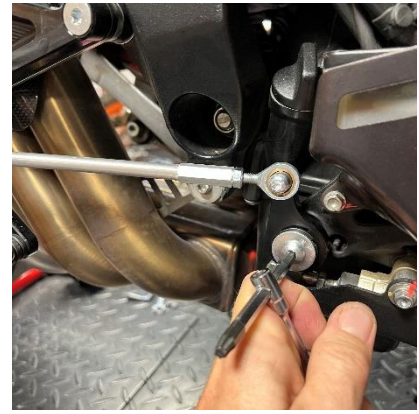
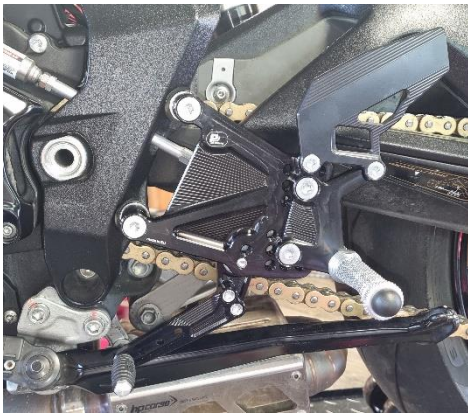
We would like to thank you for purchasing PP Tuning rear set. Please take a moment to read the assembly instructions. Following these instructions will ensure trouble free operation of this product and extend its working life.

## Left side installation

Remove the original rear set. Install the shift lever in the same place as the original shift lever according to the picture number 1.

## Right side installation

Remove the original rear set on right side and mount the rear set according pictures 2-5. It is necessary to follow the order of the washers according to picture number 5 – thick washer, exhaust holder, thin washer (red arrows).





**Important warning:**

This rear set is intended for assembly of modified motorcycle. Exhaust holder is compatible only with HP Corse exhaust. We have not tested compatibility with other manufacturers.

Rear set is not equipped with footpeg for the passenger.



And the last important information: Enjoy this product and drive carefully!

PP Tuning Team